



## Installing CDR Software

Schick Technologies, Inc.  
30-00 47<sup>th</sup> Avenue  
Long Island City, NY 11101

(718) 937-5765  
(718) 937-5962 (fax)

---

PART NUMBER B1051011 REV. C

Copyright © 2001 by Schick Technologies, Inc.  
All Rights Reserved

Many of the designations used by manufacturers and sellers to distinguish their products are claimed as trademarks. Where those designations appear in this document, and Schick Technologies, Inc. was aware of a trademark claim, the designations have been printed in caps or initial caps.

Part Number  
B1051011 Rev. C

September 11, 2001



Printed in the United States of America

This document was originally prepared in English

# 1. Installing CDR Software

When you receive your CDR software (on a set of floppy disks or on CD-ROM), follow the short directions below to install the CDR program. *(The pictures shown in the following procedure reflect the single-user version of CDR 2.5. Screens for later versions of CDR, and for CDR's multi-user setup, will differ.)*

## 1.1. Installing CDR from CD-ROM

### STEP 1

---

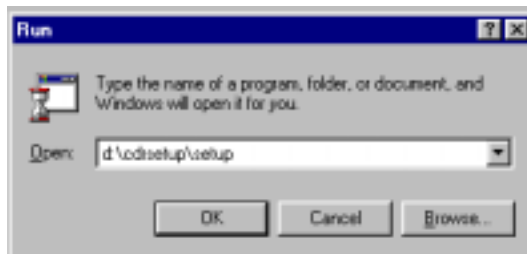
- A. Turn on your computer (if it's not on already).
- B. At the Windows desktop, insert the CD-ROM into the CD drive.
- C. The CD should play a brief intro and then display the main selection page. If it does, skip ahead to step 3. If the CD doesn't run automatically, continue with the following step.



### STEP 2

---

If the CD intro does not run automatically, click **Start**, and then click **Run**. Type **d:\cdrsetup\setup** at the command line (if “d” is the drive letter for your CD player). Click **OK**.



### STEP 3

---

- A. After the CD plays a brief intro, it will display the main selection page. At this page, click the **Install CDR 2.5** button. This will take you to the CDR installation page.
- B. To start the CDR setup program, click the button for **Single-User System** or **Multi-User System**. (The button will correspond to the type of software supplied on the CD.)



### STEP 4

---

Click **N**ext.



### STEP 5

---

Click **Y**es after reading the license agreement.



## STEP 6

---

Click **N**ext after reading the application notes.



## STEP 7

---

Click **N**ext.



## STEP 8

---

Click **N**ext.



## STEP 9

---

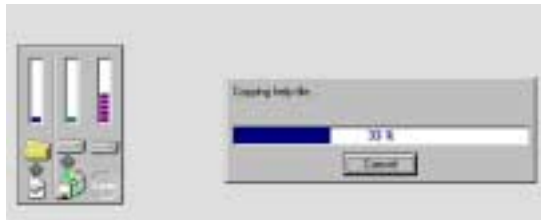
Click **Next**.



## STEP 10

---

The file copy process begins.



## STEP 11

---

- A. After all of the files are copied, the “Setup Complete” screen appears. Remove the CD.
- B. Click **Finish**, and your computer will be automatically restarted.

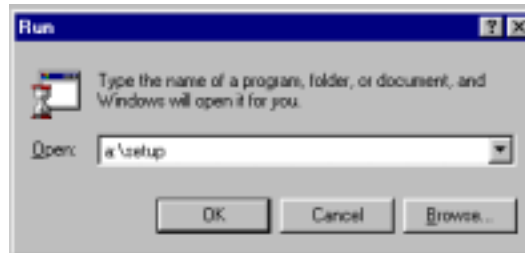


## 1.2. Installing CDR from Floppy Disks

### STEP 1

---

- A. Turn on your computer (if it's not on already).
- B. At the Windows desktop, insert the first disk of the CDR program into the floppy drive.
- C. Click **Start**, and then click **R**un.
- D. Type **a:\setup** at the command line and click **OK**.



### STEP 2

---

Click **N**ext.



### STEP 3

---

Click **Y**es after reading the license agreement.



## STEP 4

---

Click **N**ext after reading the application notes.



## STEP 5

---

Click **N**ext.



## STEP 6

---

Click **N**ext.





## STEP 7

---

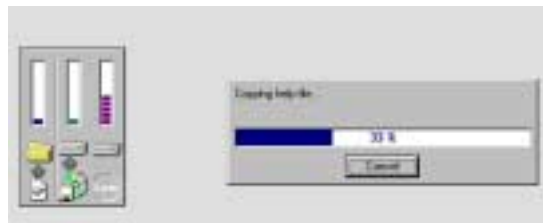
Click **N**ext.



## STEP 8

---

- A. The file copy process begins.
- B. When prompted, remove the disk from the floppy drive, insert the next disk in the sequence, and click **OK**.
- C. After the next disk has been inserted, the copy process continues until completed.
- D. Repeat these steps each time CDR prompts you.



## STEP 9

---

- A. After all of the files are copied, the “Setup Complete” screen appears. Remove the last floppy disk.
- B. Click **F**inish, and your computer will be automatically restarted.

