

# *Installing CDR Wireless / SDX Driver on Windows 7*

**(c) 2009 SCHICK TECHNOLOGIES, INC.**

**ALL RIGHTS RESERVED**

---

## **PURPOSE**

The following information will assist you with installing the driver for CDR Wireless / SDX Interface Modules on Microsoft's Windows 7 operating system.

## **REQUIREMENTS**

These instructions assume that you have the following:

- Windows 7 Home, Premium, Business, or Ultimate (all 32-bit)
- CDR DICOM 4.5 CD
- Intel or VIA USB controller.

## **INSTALLATION PROCEDURE**

Perform the following to install the CDR Wireless / SDX driver.

### *Installing the Driver*

1. Close CDR DICOM 4.5 software if open.
2. Disconnect the USB cable from the CDR Wireless / SDX Interface.
3. Insert the CDR DICOM 4.5 CD and browse to the Hardware folder.
4. Double-click on CDR WirelessSDX Interface Driver.msi.
5. When driver installation is complete, re-connect the USB cable to the CDR Elite Remote Module.
6. When reconnecting the USB cable, the Add New Hardware wizard will start. Follow those prompts until the wizard is completed.

### *Updating the Driver*

1. Open the Windows Control Panel and navigate to System and Security > System > Device Manager.
2. Windows will indicate that the device was not successfully installed (*Figure 1*) and will list it under Other devices (*Figure 2*).

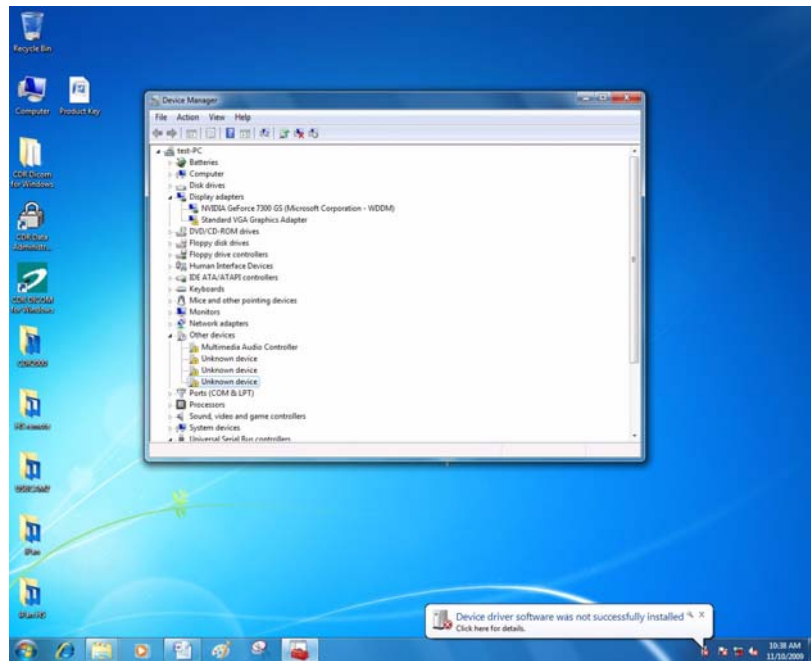
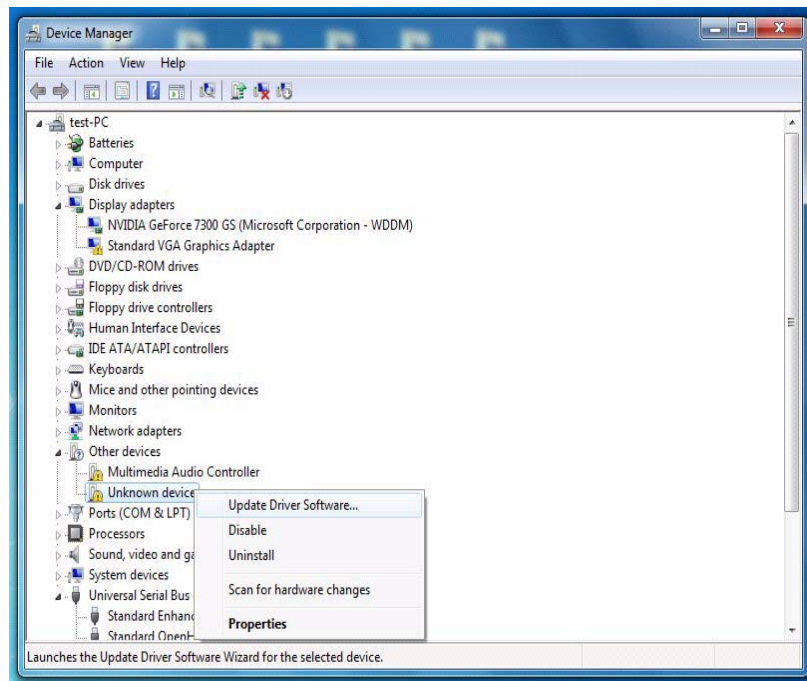


Figure 1. Device Manager on Windows 7 Desktop



*Figure 2. Device Manager*

*Updating the driver (continued)*

3. Browse the list of items for the Other Devices node. Expand it if necessary and select the Unknown device item.
4. Right-click on the Unknown device and select “Update Driver Software” from the context menu.
5. Select “Browse my computer for driver software” (Figure 3).
6. Click the Browse button and navigate to the CDR Wireless / SDX driver: C:\Program Files\Schick Technologies\Shared Files\Drivers\CDRSDX (Figure 4).

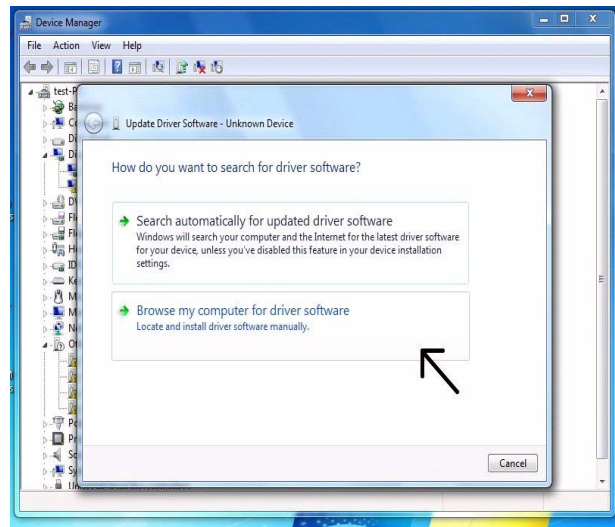


Figure 3. Search for Driver Software

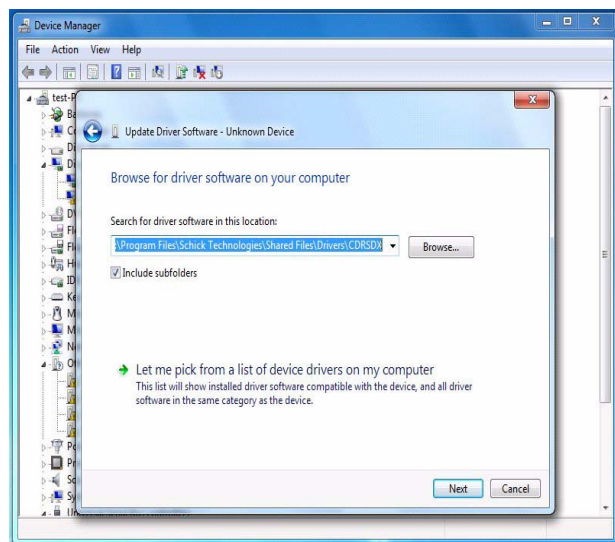
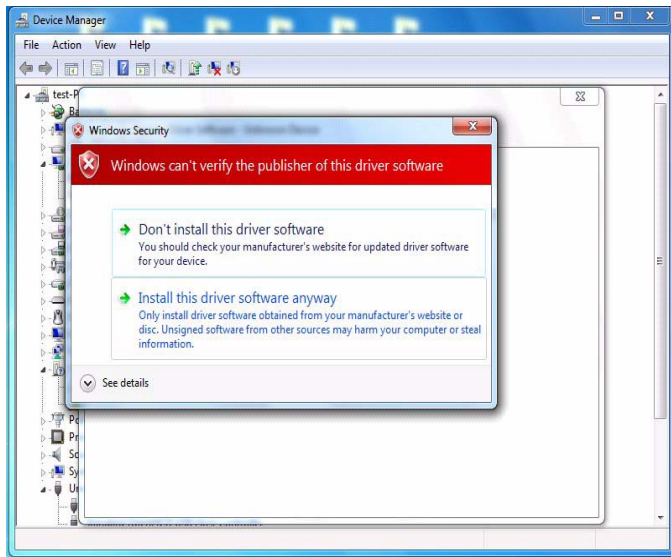


Figure 4. Browse Computer for Driver Software

---

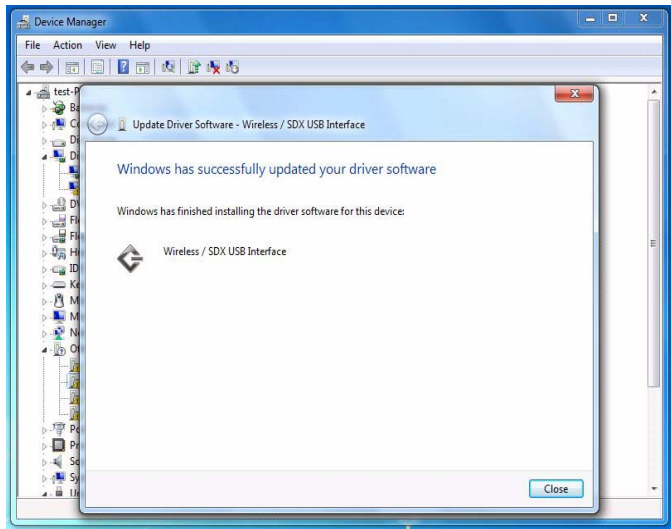
## installation Procedure

7. Click Next.
8. If a Windows Security message appears, click “Install this driver software anyway” (*Figure 5*).



*Figure 5. Windows Security Message*

9. The message, “Windows has successfully installed your software driver software” is displayed (*Figure 6*).



*Figure 6. Driver Software Update Successful*

10. Click Close.

- 11.** Repeat these steps on every workstation where the CDR Wireless / SDX Interface is used.
- 12.** If you have questions regarding the installation of the CDR Wireless / SDX Driver on Windows 7, please contact your appropriate support center for Schick Technologies' products or the authorized international dealer in your country or region.