

# *Installing CDR Remote HS Driver on Windows 7*

**(c) 2009 SCHICK TECHNOLOGIES, INC.**

**ALL RIGHTS RESERVED**

---

## **PURPOSE**

The following information will assist you with installing the driver for CDR USB Remote HS Modules on Microsoft's Windows 7 operating system.

## **REQUIREMENTS**

These instructions assume that you have the following:

- Windows 7 Home, Premium, Business, or Ultimate (all 32-bit or 64-bit)
- CDR DICOM 4.5 CD or internet access to our website

## **INSTALLATION PROCEDURE**

Perform the following to install the CDR Remote HS USB driver.

### *Installing the Driver*

1. Close CDR DICOM 4.5 software if open.
2. Disconnect the USB cable from the CDR Remote HS Module.
3. Insert the CDR DICOM 4.5 CD and browse to the Hardware folder and double-click on CDR USB Remote HS Driver.msi, or [download the Remote HS driver from our website](#).
4. When driver installation is complete, re-connect the USB cable to the CDR Remote HS Module. Make sure that the Sensor is connected also.

### *Updating the Driver*

1. Open the Windows Control Panel and navigate to System and Security > System > Device Manager.
2. Windows will indicate that the device was not successfully installed (*Figure 1*) and will be listed under Other devices (*Figure 2*).

---

## installation Procedure

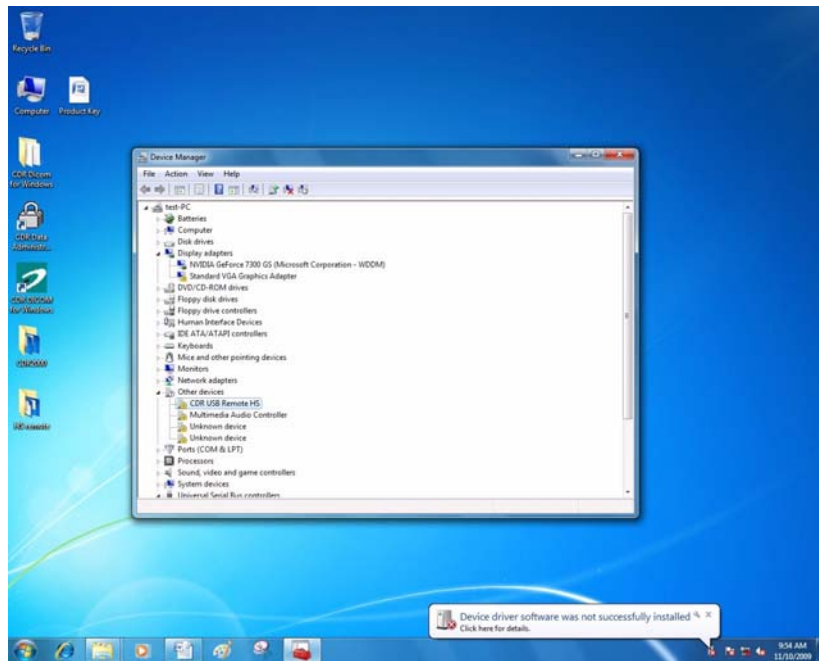


Figure 1. Device Manager on Windows 7 Desktop

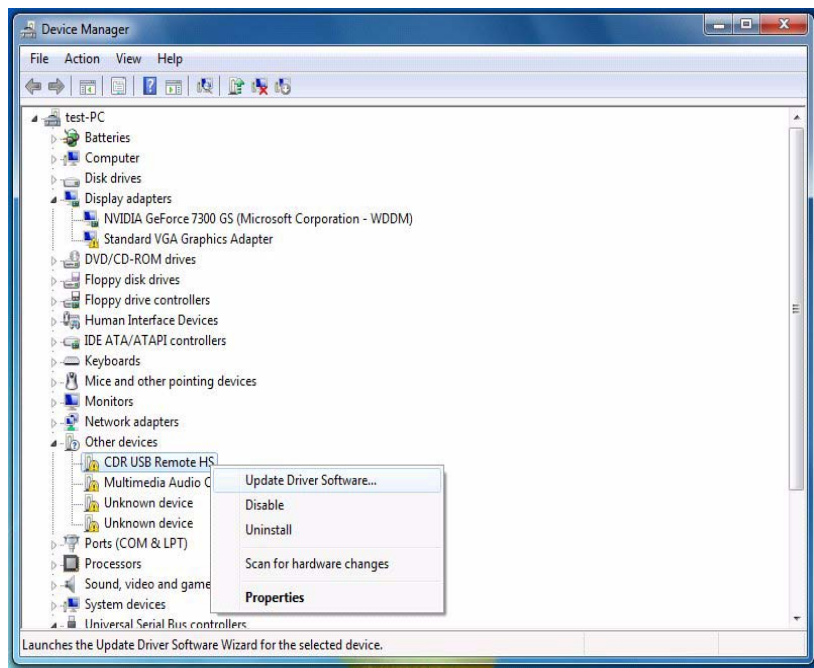
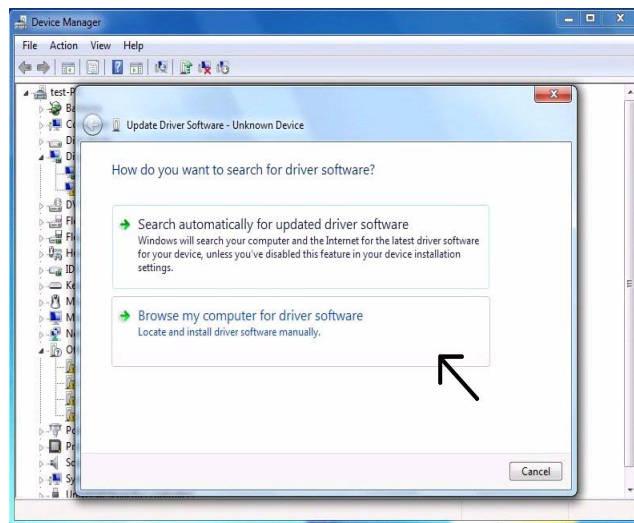


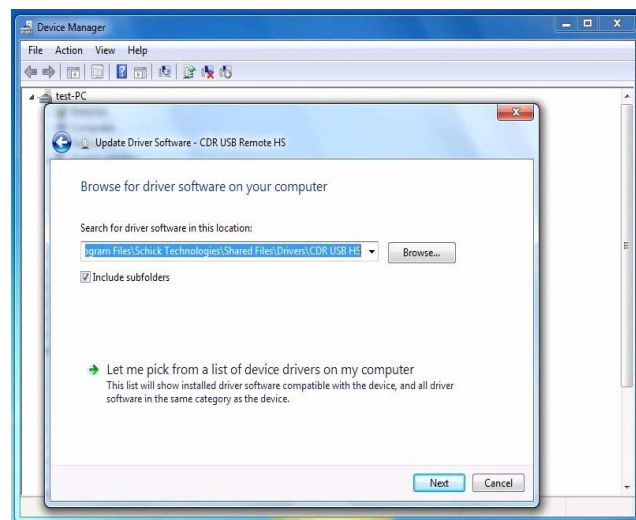
Figure 2. Device Manager

### *Updating the driver (continued)*

3. Browse the list of items for the Other Devices node. Expand it if necessary and select the CDR Remote HS device item.
4. Right-click on the Unknown device and select “Update Driver Software” from the context menu.
5. Select “Browse my computer for driver software” (Figure 3).
6. Click the Browse button and navigate to the CDR Remote HS driver: C:\Program Files\Schick Technologies\Shared Files\Drivers\CDR USB HS (Figure 4).

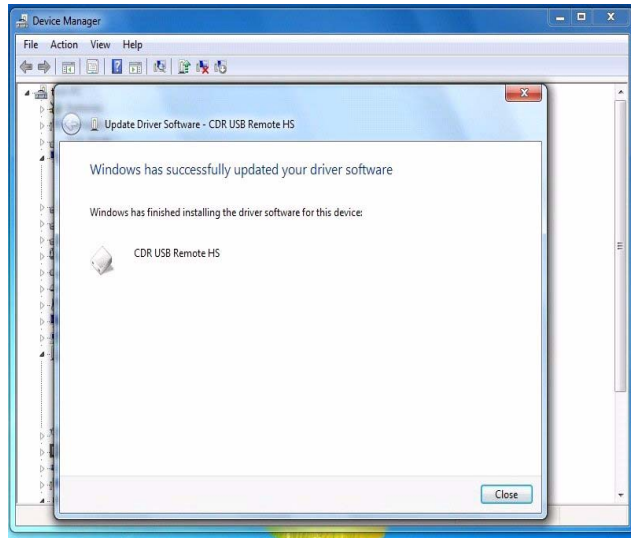


*Figure 3. Search for Driver Software*



*Figure 4. Browse Computer for Driver Software*

7. Click Next.
8. The message, “Windows has successfully installed your software driver software” is displayed (*Figure 5*).



*Figure 5. Driver Software Update Successful*

9. Click Close.
10. Repeat these steps on every workstation where the Remote HS Module is used.
11. If you have questions regarding the installation of the CDR Remote HS Driver on Windows 7, please contact your appropriate support center for Schick Technologies' products or the authorized international dealer in your country or region.