

Installing CDR2000 Driver and Revision 34 Firmware on Windows 7

(c) 2009 SCHICK TECHNOLOGIES, INC.

ALL RIGHTS RESERVED

PURPOSE

The following information will assist you with installing the driver and Revision 34 firmware for CDR2000 USB Remote Modules on Microsoft's Windows 7 operating system.

REQUIREMENTS

These instructions assume that you have the following:

- Windows 7 Home, Premium, Business, or Ultimate version (all 32-bit)
- CDR DICOM 4.5 CD
- Intel or VIA USB controller.

INSTALLATION PROCEDURE

Perform the following to install the CDR2000 USB driver and firmware version 34.

Installing the Driver

1. Close CDR DICOM 4.5 software if open.
2. Disconnect the USB cable from the CDR2000 Remote Module.
3. Insert the CDR DICOM 4.5 CD and browse to the Hardware folder.
4. Double-click on CDR 2000 USB Driver.msi.
5. When driver installation is complete, re-connect the USB cable to the CDR2000 Remote Module. Make sure that the Sensor is connected also.
6. When reconnecting the USB cable, the Add New Hardware wizard will start. Follow those prompts until the wizard is completed.

Updating the Driver

1. Open the Windows Control Panel and navigate to System and Security > System > Device Manager (*Figure 1*).

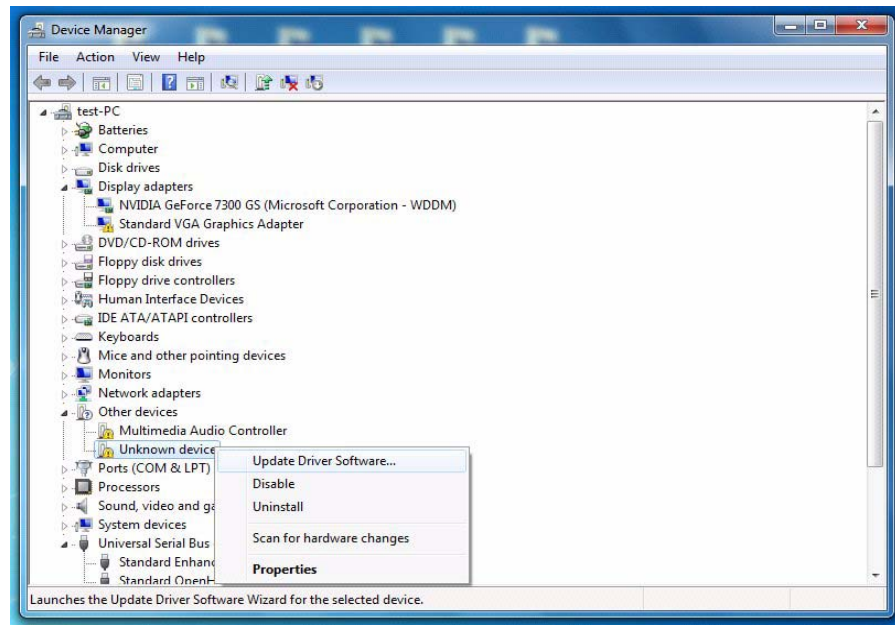


Figure 1. Device Manager

Updating the driver (continued)

2. Browse the list of items for the Other Devices node. Expand it if necessary and select the Unknown device item.
3. Right-click on the Unknown device and select “Update Driver Software” from the context menu.
4. Select “Browse my computer for driver software” (Figure 2).

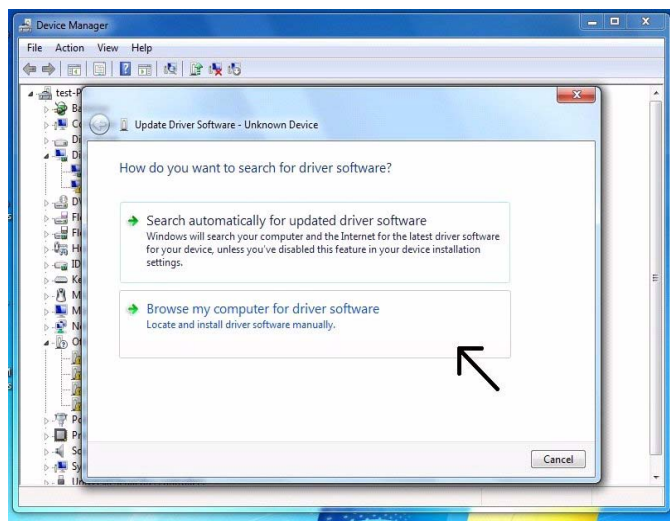


Figure 2. Search for Driver Software

installation Procedure

5. Click the Browse button and navigate to the CDR-2000 driver: C:\Program Files\Schick Technologies\Shared Files\Drivers\CDR-2000 (*Figure 3*).

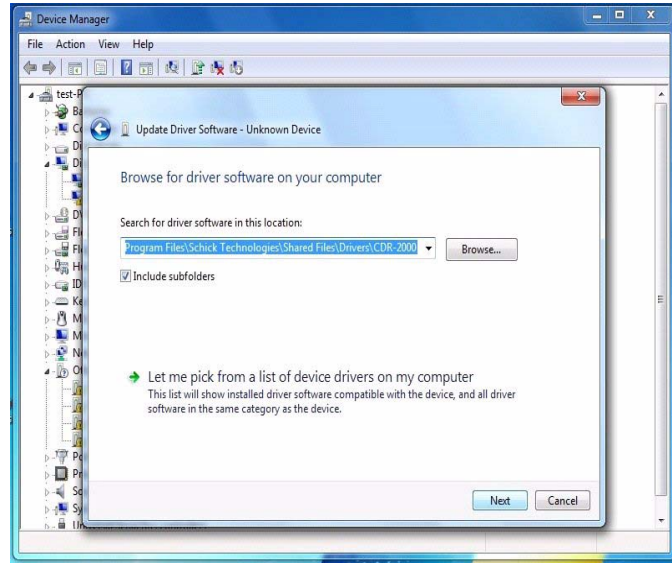


Figure 3. Browse Computer for Driver Software

6. Click Next.
7. If a Windows Security message appears, click “Install this driver software anyway” (*Figure 4*).

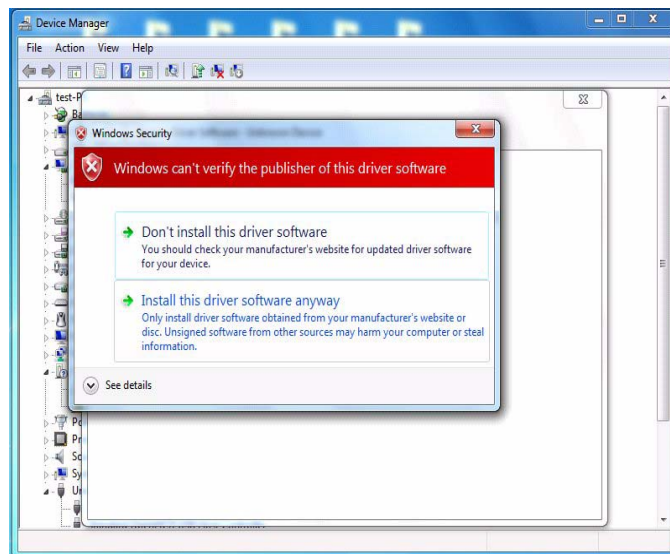


Figure 4. Windows Security Message

8. The message, “Windows has successfully installed your software driver software” is displayed (*Figure 5*).

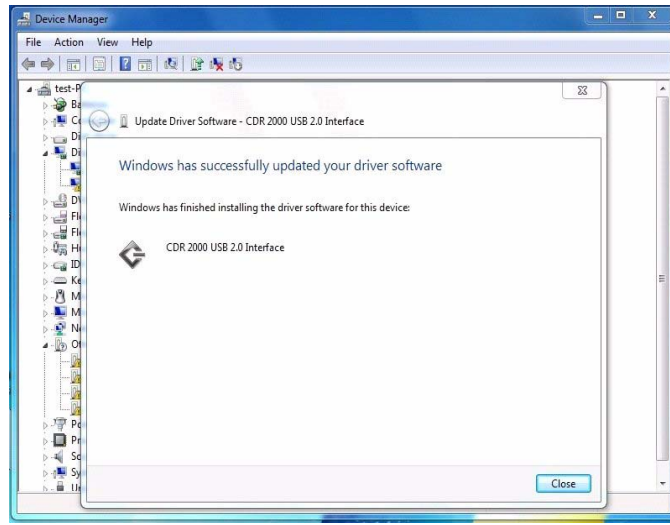


Figure 5. Driver Software Update Successful

9. Click Close.
10. Repeat these steps on every workstation where the Remote Module is used. Make sure you upgrade all of your Remotes to Firmware 34.
11. If you have questions regarding the installation of the CDR 2000 Driver with Firmware 34 on Windows 7, please contact your appropriate support center for Schick Technologies' products or the authorized international dealer in your country or region.